

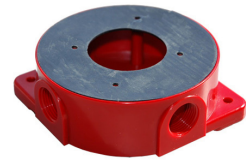
Product Overview

A Weatherproof Back Box and gasket set for the CHQ-WS2 Wall Sounder and the CHQ-WSB Wall Sounder Beacon, increases the IP Rating of the Sounder to IP65 for external use.

Standard Features

- Designed for CHQ-WS2 and CHQ-WSB
- Increases sounder IP rating from IP21 to IP65 (external use)
- Easy to install

WS2-WPK



Product Overview

An Addressable Loop-Powered Base Sounder, providing 13 volume levels and 51 tones with a maximum output of up to 98 dB(A) (± 2 dB(A)) with low current consumption. The unit is designed to fit either the YBN-R/3 or the YBO-R/SCI Bases.

Standard Features

- Loop powered
- Single loop address – addressed automatically by control panel or via the TCH-B200 hand held programmer
- 50 – 98 dB(A) (± 2 dB(A)) output at 1m
- Fits Hochiki standard or isolator base and supports ESP sensors, beacons and remote indicator
- 51 User-selectable tones (all tones EN54-3 compatible)

YBO-BS(WHT)



Product Overview

An Addressable Loop-Powered Base Sounder Beacon, providing 13 volume levels and 51 tones with a maximum output of up to 98 dB(A) (± 2 dB(A)) with low current consumption. The unit is designed to fit either the YBN-R/3 or the YBO-R/SCI Bases.

Standard Features

- Loop powered
- Single loop address, addressed by either Control Panel or TCH-B200
- 50 – 98dB(A) (± 2 dB(A)) output at 1m
- Fits Hochiki standard or isolator base and supports ESP sensors, beacons and remote indicator
- 51 User-selectable tones (all tones EN54-3 compatible)
- Beacon and sounder can be controlled

YBO-BSB(WHT)



Product Overview

An Addressable Loop-Powered Beacon, with high-intensity LEDs and a Fresnel lens design which produces a highly visible flash. The casing exactly matches the Hochiki Analogue Sensor range in shape and colour providing seamless integration.

Standard Features

- High Intensity LED technology
- 1 Hz flash frequency
- Addressable via TCH-B200
- Up to 127 devices per loop
- Choice of 3 lens colours (red, amber and blue)

CHQ-AB(WHT)



Product Overview

An Addressable Loop-Powered Remote Indicator, with high-intensity LEDs and a Fresnel lens design which produces a highly visible signal. The casing exactly matches the Hochiki Analogue Sensor range in shape and colour providing seamless integration. The unit also features two monitored inputs.

Standard Features

- High Intensity LED technology
- Addressable via TCH-B200
- Up to 127 devices per loop

CHQ-ARI(WHT)

